



Fairmont
SCOTTSDALE PRINCESS

CONFERENCE FACILITIES GUIDE



PRINCESS CONFERENCE CENTER

ROOM NAME	SIZE/SQ FT USABLE	CEILING USABLE	THEATER	SCHOOL ROOM	BANQUET	HOLLOW SQUARE	RECEPTION	CONF.	U-SHAPE	EXHIBIT 8x10	EXHIBIT 10x10	
Princess Ballroom	250'x90'	22,500	18.6'	2,990	1,650	1,980	–	2,400	–	–	137	110
Salon A	30'x47'	1,410	18.6'	180	85	110	52	150	40	45	8	8
Salon B	30'x47'	1,410	18.6'	195	85	110	52	150	40	45	8	8
Salon C	30'x47'	1,410	18.6'	185	85	110	52	150	40	45	8	8
Salons A & B	60'x47'	2,820	18.6'	330	180	220	80	290	50	65	14	14
Salons B & C	60'x47'	2,820	18.6'	330	180	220	80	280	50	60	14	14
Salons A-C	90'x47'	4,230	18.6'	500	260	350	110	450	85	90	23	22
Salons A-E	90'x114'	10,260	18.6'	1,220	560	810	–	1,000	–	–	57	53
Salons A-G	90'x177'	15,930	18.6'	1,950	1,175	1,350	–	1,700	–	–	97	85
<i>South Corridor</i>	90'x13'	1,170	18.6'									
Salon D	45'x54'	2,430	18.6'	285	150	180	70	260	45	55	14	10
Salon E	44'x54'	2,430	18.6'	285	150	180	70	250	45	60	12	10
Salons D & E	90'x54'	4,860	18.6'	600	320	360	120	510	85	100	31	31
Salons D-G	90'x117'	10,530	18.6'	1,360	720	860	–	1,100	–	–	65	57
Salons D-I	190'x90'	17,100	18.6'	2,145	1,275	1,490	–	1,900	–	–	99	85
<i>Center Corridor</i>	90'x13'	1,170	18.6'									
Salon F	45'x50'	2,250	18.6'	265	140	150	70	240	45	50	14	10
Salon G	45'x50'	2,250	18.6'	260	140	150	70	240	45	50	12	10
Salons F & G	90'x50'	4,500	18.6'	550	290	320	120	475	85	100	32	23
Salons F-I	94'x123'	11,070	18.6'	1,455	720	900	–	1,200	–	–	69	57
<i>North Corridor</i>	90'x13'	1,170	18.6'									
Salon H	45'x60'	2,700	18.6'	380	180	190	80	300	50	65	15	14
Salon I	45'x60'	2,700	18.6'	380	180	190	80	290	50	65	14	12
Salons H & I	90'x60'	5,400	18.6'	750	360	410	120	590	100	100	31	29
South Foyer	130'x22'	2,860	13.8'	–	–	–	–	290	–	–	5	1
East Foyer	240'x36'	8,640	13.8'	–	–	–	–	860	–	–	34	20
North Foyer	130'x33'	4,290	13.8'	–	–	–	–	430	–	–	21	13
Castile 1	18'x36'	648	10'	80	45	40	30	75	26	28	–	–
Castile 2	16'x28'	448	10'	52	20	20	22	50	20	18	–	–
Castile 3	29'x19'	551	10'	52	32	30	30	60	24	22	–	–
Castile 4	21'x25'	525	10'	55	30	30	24	55	20	20	–	–
Castile 5	21'x25'	525	10'	55	30	30	24	55	20	20	–	–
Castile 6	27'x19'	513	10'	60	35	30	24	60	20	21	–	–
Bourbon 8	20'x22'	440	10'	50	24	30	20	52	20	15	–	–
Bourbon 9	19'x28'	532	10'	50	28	30	26	55	22	21	–	–
Bourbon 10	28'x20'	560	10'	50	32	30	26	60	22	21	–	–
Bourbon 11	18.3'x19.5'	356	12'	40	18	20	16	38	14	14	–	–

images from left to right

PRINCESS FALLS, PRINCESS BALLROOM, PLAZA



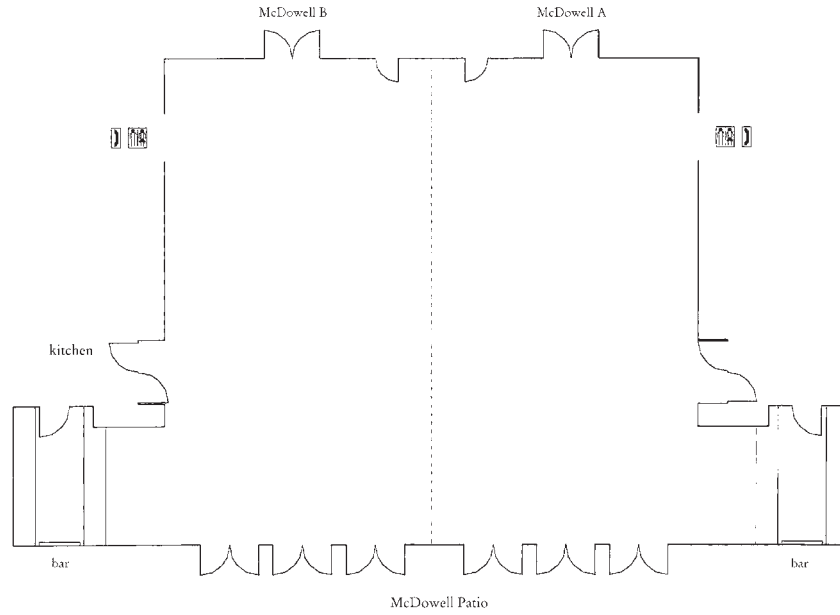
PALOMINO CONFERENCE CENTER

ROOM NAME	SIZE/SQFT USABLE	CEILING USABLE	THEATER	SCHOOL ROOM	BANQUET	HOLLOW SQUARE	RECEPTION	CONF.	U-SHAPE	EXHIBIT 8x10	EXHIBIT 10x10	
Palomino Ballroom	240'x94'	22,394	18	2,990	1,650	1,940	–	2,350	–	–	140	112
Palomino 1	51'x31'	1,572	18	200	100	110	52	165	42	45	10	8
Palomino 2	51'x31'	1,597	18	200	100	110	52	170	42	45	10	8
Palomino 3	51'x31'	1,597	18	200	100	110	52	165	42	45	10	8
Palomino 1 & 2	51'x62'	3,169	18	400	200	210	80	330	50	65	20	16
Palomino 2 & 3	51'x62'	3,194	18	400	200	210	80	330	50	65	20	16
Palomino 1-3	51'x94'	4,766	18	625	300	320	110	500	85	100	29	22
<i>West Corridor</i>	12'x94'	1,111	18									
Palomino 4	51'x47'	2,367	18	265	130	140	75	250	44	50	15	12
Palomino 5	51'x47'	2,397	18	265	130	140	75	250	44	50	15	12
Palomino 4 & 5	51'x94'	4,764	18	580	290	320	110	500	85	100	31	23
Palomino 1-5	114'x94'	10,641	18	1,400	800	860	–	1,110	–	–	58	57
<i>Center Corridor</i>	12'x94'	1,112	18									
Palomino 6	51'x47'	2,367	18	265	130	140	75	250	44	50	15	12
Palomino 7	51'x47'	2,397	18	265	130	140	75	250	44	50	15	12
Palomino 6 & 7	51'x94'	4,764	18	580	290	320	110	500	85	100	31	23
Palomino 1-7	177'x94'	16,517	18	2,140	1,200	1,400	–	1,720	–	–	100	86
Palomino 4-7	114'x94'	10,640	18	1,400	720	860	–	1,120	–	–	65	60
<i>East Corridor</i>	12'x94'	1,111	18									
Palomino 8	51'x31'	1,572	18	200	100	110	52	165	42	45	10	8
Palomino 9	51'x31'	1,597	18	200	100	110	52	170	42	45	10	8
Palomino 10	51'x31'	1,597	18	200	100	110	52	170	42	45	10	8
Palomino 8 & 9	51'x62'	3,169	18	400	200	210	65	330	50	65	20	16
Palomino 9 & 10	51'x62'	3,194	18	400	200	210	80	340	50	65	20	16
Palomino 8-10	51'x94'	4,766	18	625	300	320	110	500	85	100	29	22
Palomino 4-10	117'x94'	16,517	18	2,140	1,200	1,400	–	1,720	–	–	99	86
Palomino 6-10	114'x94'	10,641	18	1,400	720	860	–	1,110	–	–	57	57
North Palomino Foyer	247'x25'	6,227	15	–	–	–	–	630	–	–	39	31
Moor Foyer	24'x60'	1,585	15	–	–	–	–	165	–	–	–	–
Arabian Foyer	23'x61'	1,800	15	–	–	–	–	190	–	–	–	–
Moor 1	43'x26'	1,029	12'	115	65	60	40	110	30	32	–	–
Moor 2	40'x25'	960	12'	100	50	60	40	100	30	32	–	–
Moor 3	40'x25'	949	12'	100	50	60	40	100	30	32	–	–
Arabian A	40'x22'	899	12'	85	40	50	36	90	28	30	–	–
Arabian B	40'x22'	899	12'	85	40	50	36	90	28	30	–	–
Arabian Combined	48'x40'	1,798	12'	160	100	100	58	180	40	40	–	–
Dorado A	27'x25'	624	12'	60	32	40	24	65	18	20	–	–
Dorado B	27'x25'	661	12'	60	32	40	24	65	18	20	–	–
Dorado Combined	27'x50'	1,285	12'	120	65	80	50	130	42	40	–	–
Golden Room	40'x25'	956	12'	100	52	60	36	100	30	30	–	–

images from left to right

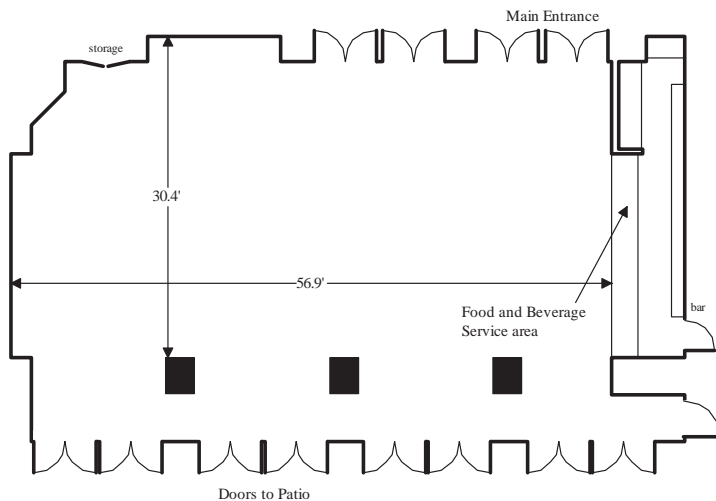
MOOR 1, PALOMINO BALLROOM, PALOMINO NORTH FOYER

MCDOWELL MEETING ROOM

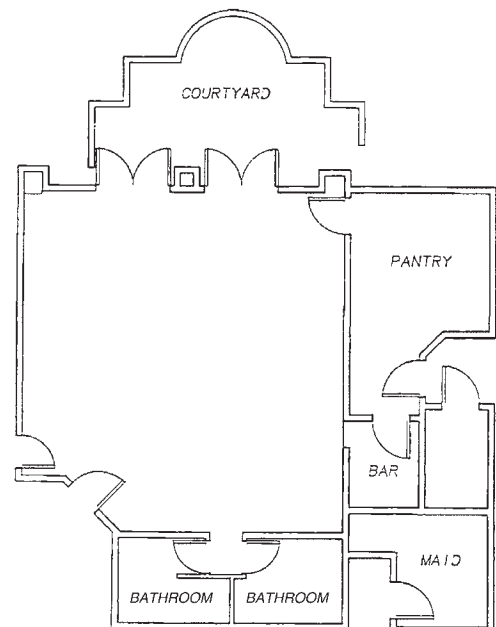


ROOM NAME	SIZE/SQ_FT USABLE	CEILING USABLE	THEATER	SCHOOL ROOM	BANQUET	HOLLOW SQUARE	RECEPTION	CONFERENCE	U-SHAPE
McDowell A & B	48'x54'	2,592	10'	300	180	180	75	320	60
McDowell A	48'x27'	1,296	10'	150	75	80	55	160	42
McDowell B	48'x27'	1,296	10'	150	75	80	55	160	42
Ironwood Room	36'x56'	2,016	9.2'	170	90	120	60	235	50
Casita Meeting Rooms (ea)	27'x26'	702	10'	65	40	40	30	80	24

IRONWOOD ROOM

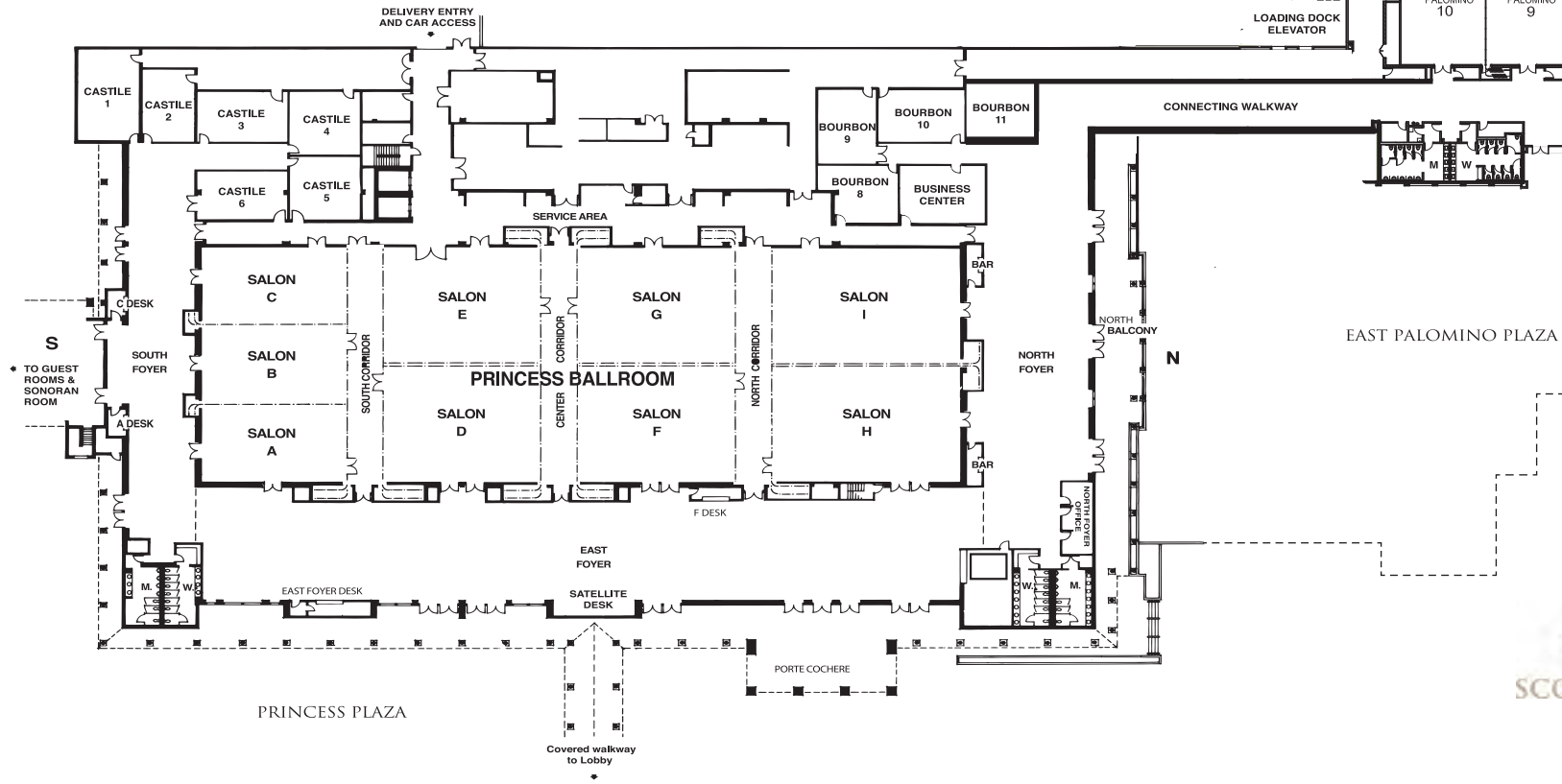
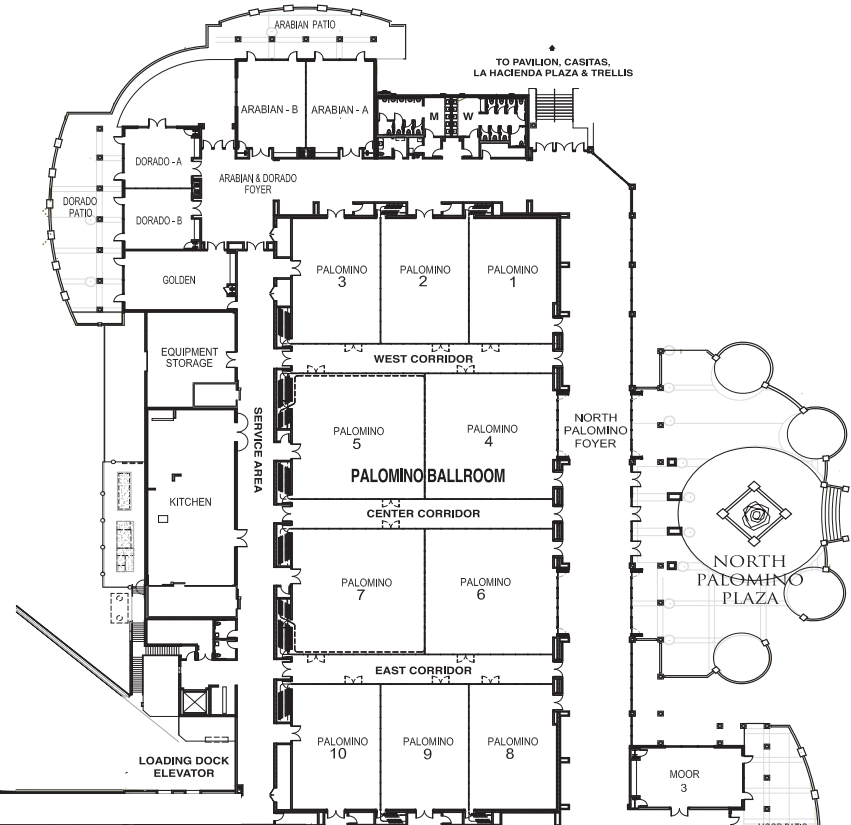


CASITA MEETING ROOM



FACTS AT A GLANCE

- Situated on 65 pristine acres in the heart of the Sonoran Desert overlooking the McDowell Mountains
- 648 luxuriously appointed guestrooms, including 213 suites
- 150,000 sq. ft. of flexible meeting space divisible into 47 meeting rooms
- Five award-winning restaurants and lounges
- Five sparkling heated pools
- Two championship-level TPC golf courses
- 44,000 sq. ft. award-winning Willow Stream Spa
- Two modern fitness centers
- Trailblazers Kid's Club for kids ages five to twelve
- Located just steps from upscale shopping, dining and entertainment





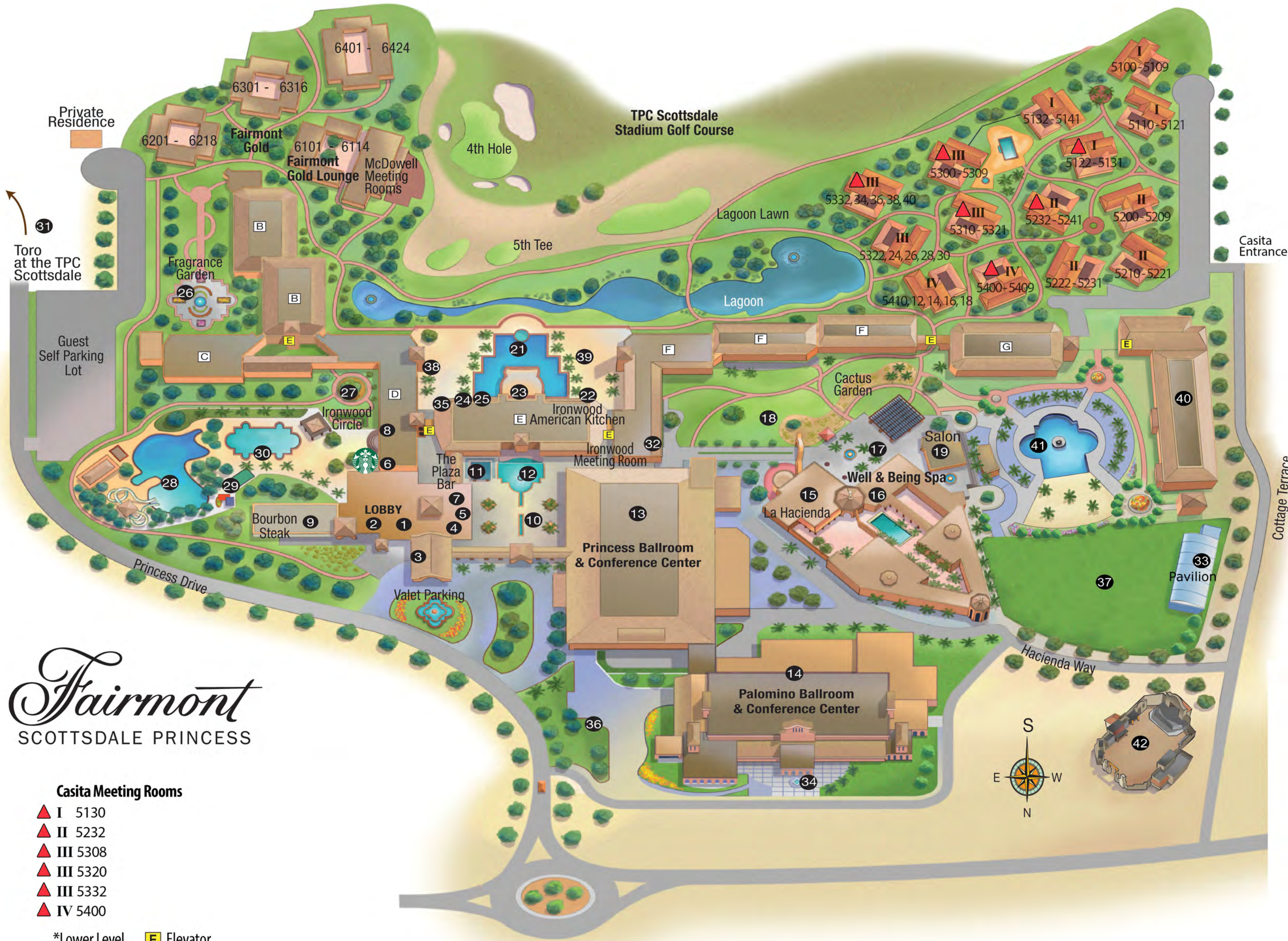
RESTAURANT & OUTDOOR EVENT SPACE

RESTAURANT	BANQUET	RECEPTION
Bourbon Steak: Indoor & Outdoor	245	300
Bourbon Steak: Indoor	180	–
Bourbon Steak: Patio	65	100
Bourbon Steak: Private Dining Room	45	80
La Hacienda: Indoor & Outdoor	350	750
La Hacienda: Indoor	200	400
La Hacienda: North Room	90	150
La Hacienda: Barbacoa Patio	140	280
Ironwood American Kitchen: Indoor & Outdoor	280	625
Ironwood American Kitchen: Indoor	200	500
Ironwood American Kitchen Outdoor	80	125
Ironwood American Kitchen: Aspen or Rosewood	25	50
The Plaza Bar Lounge & Patio	–	650
The Plaza Bar Lounge	–	150
The Plaza Bar Patio	–	500
Toro at TPC: Indoor	150	500
Toro at TPC: Patio	280	650

OUTDOOR AREA	SQ.FT.	BANQUET	RECEPTION
Princess Plaza	20,702	1,200	2,000
North Palomino Plaza	7,383	480	600
East Palomino Plaza	12,123	750	1,000
Sonoran Landing & Lawn	13,667	650	1,000
La Hacienda Plaza & Trellis	16,145	910	1,000
La Hacienda Plaza	10,216	440	500
La Hacienda Trellis	5,929	470	500
Canyon Lawn	5,305	380	500
Copper Canyon	23,290	1,350	1,500
Lagoon Lawn	21,299	1,160	1,500
Princess Falls	5,237	250	300
Princess Falls Front Waterfall	–	120	150
Princess Falls Back McDowell	–	130	150
Patio	6,288	350	500
Princess Pool Overlook	–	150	150
Princess Pool	17,120	980	1,200
Princess Pool Upper West Deck	4,359	150	200
Princess Pool Upper East Deck	3,373	150	200
Fragrance Garden	9,963	160	200
Pavillion	18,000	1,220	1,800

images from left to right

COPPER CANYON, BOURBON STEAK, PRINCESS FALLS



Fairmont

SCOTTSDALE PRINCESS

Casita Meeting Rooms

- ▲ I 5130
- ▲ II 5232
- ▲ III 5308
- ▲ III 5320
- ▲ III 5332
- ▲ IV 5400

*Lower Level **E** Elevator

- 1. Lobby
- 2. Front Desk
- 3. Bell Desk
- 4. Concierge Desk/Golf Concierge
- 5. Car Rental
- 6. Provisions Retail Market
- 7. Maverick Menswear
- 8. Anna J Boutique
- 9. Bourbon Steak by Michael Mina

- 10. Princess Plaza
- 11. The Plaza Bar
- 12. Princess Falls *
- 13. Princess Ballroom & Conference Center
- 14. Palomino Ballroom & Conference Center
- 15. La Hacienda by Richard Sandoval
- 16. Well & Being Spa
- 17. Hacienda Plaza & Trellis
- 18. Canyon Lawn

- 19. Well & Being Salon
- 20. Casita Pool & Jacuzzi
- 21. Princess Pool & Bar
- 22. Ironwood American Kitchen*
- 23. Cabana Cafe/Princess Pool Bar*/Princess Pool Overlook
- 24. Trailblazers Family Adventure Center*
- 25. Fairmont Fitness Center *
- 26. Fragrance Garden
- 27. Ironwood Circle

- 28. Sonoran Splash Pool
- 29. Sport Court & Playground
- 30. Sonoran Landing Pool
- 31. Toro Latin Restaurant & Rum Bar at TPC
(complimentary shuttle at front drive)
- 32. Ironwood Meeting Room*
- 33. Pavilion *(seasonal)*
- 34. North Palomino Plaza
- 35. Saguaro Boardroom

- 36. East Palomino Plaza
- 37. **COMING SOON!** Sunset Lawn
- 38. Princess Pool Upper East Deck
- 39. Princess Pool Upper West Deck
- 40. **COMING SOON!** Sonoran Beach Building
- 41. **COMING SOON!** Sunset Beach Pool
- 42. Copper Canyon Western Town

Fairmont Gold:

- 6101 - 6114 | 6201 - 6218
- 6301 - 6316 | 6401 - 6424

Building B:

- 1082 - 1118 | 2082 - 2118
- 3082 - 3115 | 4082 - 4098

Building C:

- 1119 - 1144 | 2119 - 2144
- 3119 - 3141

Building D:

- 1067 - 1081 | 2067 - 2081
- 3061 - 3081 | 4061 - 4081

Building F:

- 1014 - 1037 | 2006 - 2037
- 3001 - 3037 | 4001 - 4021

Building G:

- 1201 - 1220 | 2201 - 2220
- 3201 - 3220

Sunset Beach Building:

- 1401 - 1434 | 2401 - 2434
- 3401 - 3434

Casitas I:

- 5100 - 5109
- 5110 - 5121
- 5122 - 5131
- 5132 - 5141

Casitas II:

- 5200 - 5209
- 5210 - 5221
- 5222 - 5231
- 5232 - 5241

Casitas III:

- 5300 - 5309
- 5310 - 5321
- 5322, 24, 26, 28, 30
- 5332, 34, 36, 38, 40

Casitas IV:

- 5400 - 5409
- 5410, 12, 14, 16, 18